



La Société

For nature, history and science in Guernsey



Approaching Jethou - June 2019. Photo courtesy of Jackie Ward.

President's Report

In June we put on four more guided walks around Jethou which were fully booked and enjoyed by all. My thanks to everyone who led the walks and of course to Sir Peter Ogden, tenant of Jethou and Buz White of "Access Challenger" charters.

As I write, a small group of La Société members are preparing to head off to Alderney for the annual Inter-Island Environmental Conference. The questions under discussion will include investigating the role that the islands of the British Isles and Overseas Territories have to play in a world where ecosystem collapse is seen as increasingly inevitable, and whether our islands could act as biodiversity lifeboats or refuges for the unique endemic species they host and as shelters for habitats and species under increasing pressure elsewhere. The Alderney Wildlife Trust, who are hosting the conference state "The Wilder Islands Conference combines the annual Inter-Islands Environment Meeting with an additional day of talks and discussions, the aim being to enable representatives

from not only the Channel Islands, but also from across the British Isles and its Overseas Territories and the wider scientific community, to discuss the role of islands as biodiversity hotspots in a future response to global environmental decline. The Wilder Islands Conference aims to bring scientists, conservationists and policy makers together to focus on what steps these communities might take for a Wilder Future for their islands". Visiting speakers include Tony Juniper and Dr. George McGavin so it promises to be a very interesting four days. I look forward to providing a full report in the next newsletter.

At the last AGM it was agreed to increase subscription rates from January 2020 to account for inflation since the last increase around six years ago. Although we'd rather not have to increase rates, our costs, particularly land maintenance which is one of our main expenditure items, don't stand still. Single membership will be increasing from £25 to £28 and joint/family membership from £30 to £34. If you pay by standing order, please could you arrange with your bank to increase the amount paid. For those of you who pay by direct debit, you do not need to take any action. Thank you all so much for your ongoing support.

You may recall that in the last newsletter, I wrote about the final award of the Griff Caldwell Bursary. Since then, one of our members has generously offered to fund a new bursary for a further five years. We are delighted to accept this offer and we will be reviewing the terms of the bursary, which will be advertised next spring. Amongst other changes we hope to focus the bursary on local research.

La Société again took a stall at the West Show in August. We were delighted to sign up another ten new members over the two days and thank them for their valued support. To date we have welcomed over 170 individuals, couples and families as members this year.



Our stall at the West Show. Photo courtesy of Yvonne Burford.

After just 10 months as Section Secretary for Zoology Charlie Le Marquand is leaving us for a coveted job with the Mammal Society in the UK.

We are very sorry to see her go but wish her every success in her new role and thank her for her energy and enthusiasm. Please contact our Secretary Kate Lee by email secretary@societe.org.gg if you would be interested in taking on the role of Zoology Section Secretary.

This summer's Nature Guernsey events have been very well attended, especially by families, with children very keen to find and identify moths and other insects. The next Nature Guernsey event will be a walk at Pleinmont on Sunday 20th October meeting at 9.45am for a 10 am start, looking for migrant birds. Please meet at Pleinmont headland (Perry's ref 32B2).

The bat section has also hosted three very popular events which have attracted up to one hundred people a time keen to learn more about these sometimes-misunderstood animals.

A little outside our normal sphere of interest, we hosted a fascinating talk about concrete by Chris Shaw, in particular in relation to our World War II fortifications.

Our programme of presentations continues through the winter. These are advertised on social media, on our website and by email – I hope you are able to enjoy some of them.

Yvonne Burford

2017 Transactions

The 2017 Transactions are still available for collection from Candie. The picture on the front cover is of a Hawfinch. The office is open on a Tuesday, Thursday and Saturday morning between 10am and 11.30am – parking is easier on a Saturday morning.

We have many uncollected Transactions for 2014, 2015 and 2016. If you are unable to get to Candie to collect kindly let us know. If you no longer wish to receive the Transactions or would prefer to receive them electronically via our website kindly email secretary@societe.org.gg

Regarding the 2018 Transactions, we hope to have them published before Christmas so will let members know when they are ready for collection from Candie or by download from our website www.societe.org.gg

Subscription Rate Increases

Please note we are increasing local subscription rates as below.

	Local	Overseas
Single	£28	£28
Double/Family	£34	£34
Student	£5	£5
Corporate	£200	£200
Schools	£20	£20
Life Membership-single	£360	£360
Life Membership-double	£480	£480

Standing Orders and Direct Debits will be taken in January 2020. For those paying by cash, cheque or Paypal (via the Website) please note that your 2020 Subscription will be due on January 1st 2020.

A few of our members are still paying by Standing Order at out of date rates. If you are paying by Standing Order then kindly instruct your bank to pay the correct amount as shown above. We do understand that some of our long-standing members may experience difficulties in submitting the correct amount but Council has regretfully decided that due to high printing and postage costs, these members will no longer

receive a copy of the annual Transactions. If you would prefer to switch to paying by Direct Debit for 2020 then kindly e-mail secretary@societe.org.gg for a Direct Debit form which will be processed in time for January 2020.

Book Sale Saturday 23rd November, at the Russels, Les Cotils – 2-4pm.

Please note we will be holding a book sale on Saturday 23rd November at the Russels, Les Cotils between 2 and 4pm. There will be a large selection of fiction, non-fiction and local books for sale plus local view Christmas cards (6 for £1.00). Family History will be selling their publications together with handmade Christmas cards and gift tags. If you have any books you would like to donate please contact our secretary Kate Lee email secretary@societe.org.gg to arrange to drop them off at Les Cotils at least 10 days before the event.

Thanks to our Corporate Membership Sponsors for 2019

Bank Julius Baer & Co Ltd, Bayswater (Guernsey) Limited, Butterfield Bank (Guernsey) Limited, BWCI Foundation, Collette Jones & Co, Creasey's Limited, Garenne Construction Group Limited, Guernsey Museum & Art Gallery, Guernsey Post Limited, Insurance Corporation of the Channel Islands, Investec Asset Management Guernsey Limited, J.W. Rihoy & Son Ltd, KPMG Channel Islands Limited, Moore's Hotel, Perkins Trustees Limited, RBC Wealth Management, Ronez Limited, R A Rossborough (Guernsey) Limited, Stan Brouard Limited, The Channel Islands Co-operative Society Limited.

Special Smooth-leaved Elms

Last year I was sent some special Elm seeds gathered from wild, 'somewhat' Dutch elm disease resistant Smooth-leaved Elms (*Ulmus minor*). The seeds were from wild elm trees discovered in Normandy, mostly near Caen, but some also came from a tree found near Saint-Lo-D'ourville near Jersey. I am now in possession of saplings ranging in size from 5 to 16 inches high, and would like to find homes for some of them.

These Elms are the same species as the 'Guernsey Elm' (*Ulmus minor* 'Sarniensis') which we frequently see in the island, except that, whereas all Guernsey Elms are infertile, identical horticultural clones (with an unknown origin outside of Guernsey), these wild Elms are not clones and should be fertile given the right conditions. In addition Guernsey Elm is not Dutch elm disease resistant although, once hit by the disease, it will continue to sucker, grow, and be killed over and over again.

Smooth-leaved Elms are probably native to NW France but it seems doubtful that they are native to Guernsey. Having said that, these naturally 'somewhat' D.E.D. Elms should be okay to plant in gardens and non wild places, perhaps as a replacement for lost Guernsey Elms.

I am ideally looking for people who will either grow the saplings on, or plant out two or more near to each other, and I would prefer to make a simple record of their locations. The plants that I have are still fairly small, but it should be okay to plant them out this winter starting in November.



Guernsey Elm saplings. Photo courtesy of Andrew Lee.

If you would like a plant, you can email me or phone on 235916. I am asking £3 for larger plants, and we can come to an arrangement for the smaller ones.

Andrew Lee: email Lee-A@GMX.com



Guernsey Pesticide Free Forum – Wednesday 23rd October, Les Cotils
3.00-5.30pm Stakeholder Meeting
7.30-9.00pm Public Open Meeting

La Société Guernesiaise's Pollinator Project aims to raise awareness of the genuine contribution we can each make to the enhancement of Guernsey's biodiversity by providing food and habitats for pollinators.

As highlighted by Prof Dave Goulson during his talks to a number of Guernsey audiences in May, evidence continues to grow about the negative impact caused by the various chemicals we use to manage our land both to our own health and the environment on which we all depend.

Pesticides impact nearly all life on earth. Pesticides are designed to kill pests. They include a wide range of compounds including herbicides (designed to kill plants), insecticides, fungicides, rodenticides, molluscicides and nematicides, but also include plant growth regulators, defoliants and desiccants. They are mainly used in the growing of agricultural crops, but are also used in our towns, cities, homes and gardens.

The Pollinator Project would ideally like to see a future where Guernsey is pesticide free, or predominately finds alternative and healthier methods to grow crops, plants and control pests and weeds.



Ivy Bee on Red Campion. Photo courtesy of Barry Wells.

But what are the alternatives? Are they any better? And how can we carry on business as usual without them? What would this mean practically for Guernsey?

To this end they are organising a Guernsey Pesticide Free Forum on Wednesday 23rd October at Les Cotils where we have invited a number of people that can help us answer some of these questions and hopefully sign a long term roadmap for our community. The Forum will involve a stakeholder session during the day 3-5.30pm together with an evening session for the public 7.30-9pm

We currently have the following parties who will be involved in the discussion:

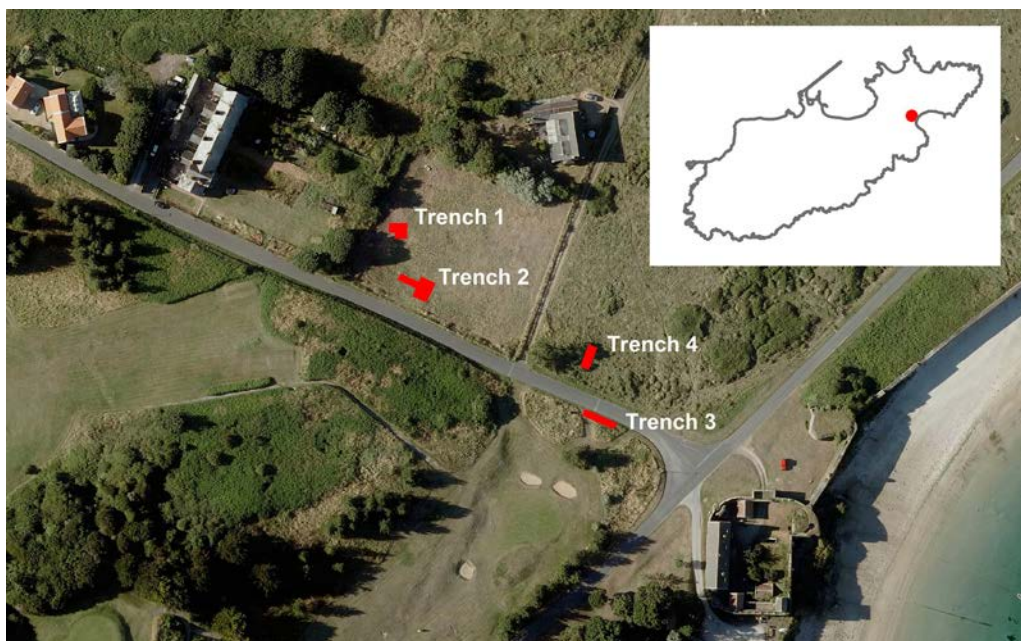
Pesticide Action Network UK, RosyBee Nursery (UK) - Pesticide Free Plant Nursery, James Watts (Local farmer), Julia Henney (Gsy Biodiversity Officer), John Woodward (Local horticulturalist / Floral Guernsey), Miranda Bane (Bumblebee Research), Soil.gg

If you would like to be involved in any way please contact us via pollinatorproject@icloud.com. We look forward to seeing as many members of La Société Guernesiaise there as possible as this is a key debate for our local and global environment.

Section Reports

Archaeology

This summer we excavated in three areas on Longis Common, Alderney. This work followed on from excavations in 2018 when we uncovered the walls of several buildings and found deep layers of Roman occupation. Last year's trench in the Paddock (Trench 2) was partly re-opened and then extended to the south-east; the excavations beside Rue des Mielles (Trench 3), which had been left open, were cleaned up and extended; a new trench was opened on the north side of the road (Trench 4).



Areas of excavation in 2018 and 2019. Trenches 2, 3 and 4 were worked on in 2019; trenches 1, 2 and 3 in 2018. The Nunnery (Roman fort) can be seen in the bottom right hand corner. *Image courtesy of Digimap*

Once again the excavations were very productive. In Trench 2 we revealed more walls of the building first identified in 2018 and now have the complete dimensions of what appears to be a courtyard (about 6 x 5 metres), perhaps internal to a building. It is not possible to say what the building was used for at present, but there were certainly many finds: much pottery, animal bone and shell from the deep 2nd-3rd century occupation layers; also occasional pieces of Roman glass and metalwork including part of a gold ring. Beneath the Roman walls and occupation layers we found more of the Iron Age cemetery glimpsed last year. This summer we were able to excavate three burials, two of these individuals had been interred wearing bronze rings. The burials are very similar to those found in the Kings Road area of Guernsey, however, unlike at Kings Road, the sands of Longis allow for the preservation of bone and this will allow us to say so much more about the people buried there.

Trench 3 was located in an area much restricted by services and so consisted of a long narrow excavation. This revealed the walls of several small buildings, or perhaps a series of rooms, and once again there were rich finds. Notably a piece of Frankish glass and some pottery, these are of a 6th-7th century date, finds of this period are very rare in the Channel Islands and also extend the known period of occupation at Longis by another couple of hundred years.



Trench 2 showing the Roman walls and the windblown sand which covered them. Photo courtesy of David Nash.

The new trench on the north side of the road (Trench 4) revealed a medieval wall just below the surface and a very substantial Roman wall lower down. There was also a large and deep area of apparently dumped cobbles. These were in a black peaty soil and had been roughly dressed, they must have been put there deliberately, but why is a mystery for the moment. They are at depth more than two metres and are certainly of Roman or Iron Age date.

If you would like to know more about the archaeology of Longis Common there will be two lectures this winter:

Wednesday 27th November at 7.30pm "The archaeology of Longis Common" by Tanya Walls

Wednesday 4th December at 7.30pm "The latest from Longis: 2019 excavations" by Phil de Jersey

The lectures are free and there is no reserved seating.

Tanya Walls (Archaeology Secretary)
archaeology@societe.org.gg



Burial under excavation in Trench 2, the skull has already been removed, note the bronze ring at the neck.

Photo courtesy of David Nash.

Astronomy

A successful open day was held at the Observatory on Bank Holiday Monday, the 27th May from 10.30 am to 12.30 pm to observe the Sun and for talks about it.

A second Solar Open Day was held on Saturday 24th August, including observations with Jean Dean's new solar telescope, giving detailed images in the H α wavelength. The Guernsey Press and Channel Television attended, and interviewed Section members and some of the many children present.

The Observatory was, as usual, open every Thursday evening during the summer school holidays, from the 25th July to the 29th August. Some of the nights were beautifully clear, and excellent views of Jupiter and Saturn, together with many other objects such as the Ring Nebula in Lyra, the Hercules Star Cluster, and the Andromeda Galaxy. Talks and slide-shows were presented by Jason Hill.

The Observatory will be open again on Thursday 31st October from 6.30 pm, with a Halloween theme. It will again open on Monday 11th November from 1.00 pm to 2.00 pm to observe a rare transit of the planet Mercury across the face of the Sun.

On Saturday 6th July Claudio Dandolo of telescope-making company Telescopi Italiani gave a talk at the Observatory about his special design of astrograph telescopes and the research possibilities within the reach of amateurs, especially in the identification of exoplanets, or planets around stars other than our Sun.

The Section's annual barbecue and Perseid meteor watch took place at the Observatory on Tuesday 13th August. Despite a bright moon a number of bright meteors were seen.

The 50th anniversary of the Moon landings created a huge amount of public and media interest. On the anniversary of the launch of Apollo 11, the 16th July, I gave a lecture at Candie entitled Man on the Moon, covering the whole Apollo programme and the small part I played in it. This was followed by observations from Candie Gardens of the initial stage of a partial lunar eclipse.

On Thursday, the 17th October, at 7.30 pm at Candie Dr Robin Catchpole of the Institute of Astronomy in Cambridge will give a talk entitled Eclipse 1919: That changed the way we see the world. Observations of this total solar eclipse proved that one of Einstein's predictions of his General Relativity theory was correct, and made him famous.

Further activities this year may include a deep-space imaging course and another solar open day. Members will be notified as usual through La Société and on the Section's website (www.astronomy.org.gg) and Facebook page (www.facebook.com/AstronomyGuernsey).

David Le Conte



Section member Owain Catton shows a visitor the Sun through Jean Dean's special telescope.
Photo courtesy of David Le Conte.

**An illustrated talk
by Dr Robin Catchpole
Institute of Astronomy,
Cambridge**



**Eclipse 1919
that changed
the way we see
the world**

**7.30 pm, Thursday
17th October
At the Frossard Centre,
Candie Gardens
Free admission**



Einstein and Eddington

In the age of GPS, Einstein's theories of Relativity lie at the heart of our everyday lives. One hundred years ago in early 1919 almost no-one had heard of Einstein; by the end of the year he was famous. At the Solar eclipse in 1919, one of the predictions of his General Relativity theory was put to the test and found to be correct. In this talk, after a brief introduction to Relativity, we will see how this was done by two expeditions sent to observe the eclipse from Africa and South America, and the pivotal role played by Sir Arthur Eddington

Presented by the Astronomy Section, La Société Guernesaise

www.astronomy.org.gg



La Société

For nature, history and
science in Guernsey

Bat Section

The Bat Section has had a very busy year.

New membership includes Rachel Gordon, new to Guernsey from Ireland. Andrew Lee who has proved himself very good at finding bat roosts. Elaine Mahy who has taken on the brave challenge of getting good photos of bats and Andy Smith who brings his moth identification skills.

We started the year adventuring down war tunnels and deploying our static detectors to observe the hibernation activities of our larger species of bats.

We are very happy to report the findings of several new summer bat roosts, and even have found an endangered Grey Long Eared bat roost.

One of the aims of the group has been to engage with the public who we believe if educated will protect and be proud of the bats that we have here in Guernsey. Therefore we have had several public bat walks. On Friday 16th August we had our first bat walk at Saumarez Park. It was attended by 70 people. Our following walk at Le Foulon Cemetery had 101 people attending and our final walk at The Reservoir had a more respectable 8 people attending. The success of the bat walks is partly due to the good work of our media officer Richard Lord who has created some wonderful flyers that have been distributed on social media sites.



Pipistrelle bat at the Reservoir.

Photo courtesy of Elaine Mahy.

We are also delighted to have acquired some new equipment. Of note, the Audiomoth. A static bat detector that is so new in its design stage that they have not even been fitted with external casing and have to be protected from the elements by plastic bags! The best feature of these new generation detectors is the cost. At £50 each they have made static bat detecting a more affordable.

Our aims for the winter are to search for winter roost sites using our static bat detectors and perhaps a lecture on Guernsey bats at Candie.

Charles Hurford

Contact Charles Hurford email bats@societe.org.gg for details of the next Bat Section meeting at Candie. New members are always welcome.

If you find an injured bat please contact the GSPCA direct on 257261 or 07781 104082 (24 hour emergency). Any bat queries can be sent by e-mail to Aimeé Golden aimee_golden@hotmail.com

Botany

A beautiful summer saw well attended walks at 3 different locations. Our first visit to the Ozanne reserve in July led us across L'Anresse Common to the reserve. The Common brought plenty of interest, with Autumn Squill, *Scilla autumnalis*, showing in profusion. The Orchids in the Reserve were, of course, over but we were still able to record plants typical of marsh habitat and practice our Grass, Rush and Sedge identification skills.

August took us to the Colin Best Reserve and a lovely diverse list of species. A sharp eyed member of the group spotted Strawberry Clover, *Trifolium fragiferum*, as we were leaving. A plant not often recorded locally and not previously recorded in this location.

September took us to L'Anresse with lots of new faces. A lovely spot for botany, we were pleased to see lots of Autumn Squill mingling with Autumn Lady's Tresses, *Spiranthes spiralis*. The Field Eryngo, *Eryngium campestre*, was growing in abundance. On the red data list in the UK, this is an important stronghold.

One of our number attended the Botanical Society of the British Isles Annual Summer meeting in the Yorkshire Dales. Inadvertently, she volunteered Guernsey as a possible location for a future meeting. We are pleased to report that in May, 2021, the ASC of the BSBI, will be held in Guernsey.

The Botany Section are always interested in surveying new areas, so if you have an area of land that has been managed with conservation in mind, then please don't hesitate to email botany@societe.gg.

Helen Litchfield

Botany Walks

Saturday 2nd November - Le Grande Pré, Perry's guide pg 7, G4.

Saturday 7th December - Sausmarez Manor gardens and grounds, by kind invitation of Peter de Sausmarez, Perry's guide pg 31, E1. Please meet in the bottom car park.

All walks meet at 2pm for a 2:15pm start.

For further enquiries about the monthly Botany walks please contact Anna Cleal by email: botany@societe.org.gg

Join the Botany Section's Facebook page to find details of the monthly walks and recent plant photos. Once you have joined you can add your own images. <https://www.facebook.com/groups/1310943042297921/>

Family History

The Family History room at the Russels, Les Cotils is now back on winter opening times of 10 am until noon on the 1st and 3rd Saturday of each month. Everyone is welcome so if you have a friend or relative who would like help on how to research their family or if you need advice with any problems we are happy to help.

If any of you have a family story or article you would like to see printed in the next Journal, please send it to researchenquiries@hotmail.co.uk

Any general Family History queries should be addressed to The Family History Section, PO Box 314, St Peter Port, Guernsey GY1 3TG. Alternatively email Maria van der Tang researchenquiries@hotmail.co.uk

Historic Buildings

Unusually, the Historic Buildings Section is having a last visit this year rather later than usual. This is in order to fit in with other things, but it is a particularly important visit for us, because it was here, as a result of the Vernacular Architecture Group [of England and Wales] having their Spring Conference in Guernsey in 1993 that a group, partly of interested owners of historic houses, WAS FORMED to study our old buildings, and the first place we were invited to was La Grande Maison, opposite the north end of the Rue Sauvage, by Mr. John Roussel, the owner at that time, and one of the first advocates of sensitive restoration of such buildings, rather than their demolition and replacement. He had, at considerable expense, employed an English architect, between the Wars, to return La Grande Maison from use as a tumbledown barn to a very nice and interesting home.

We had not had many meetings before our activities came to the notice of Major-General Griff Caldwell, then President of La Société, who insisted that we become a Société Section, which we have been ever since. It is our good fortune that just in the year of our 25th Anniversary, La Grande Maison has new owners who also have an immense pride in their home, and it is a most unusual one. Not only does it have one of the two best examples of a medieval chamber wing in the island, added to an even older house, but there is good reason to think that it once had a purpose-built brewhouse at one end of the building, as did La Bellieuse Farm when that was the rectory of St. Martin's. Moreover, we are lucky in having two detailed inventories of the 17th century, when the house belonged to the Lainé family, showing how exactly it was used at that time, and how fashions and equipment changed, just in 50 years.

Apart from that visit, the Section returns as usual for lectures at Candie on Saturday evenings during the Autumn and Winter months.

Events

Saturday 12th October – 2.30pm – VISIT at 2.30pm – we are invited by Mr.and Mrs. Fysh to celebrate the 25th Anniversary of our existence at the place where we had our first visit, La Grande Maison at L'Islet.

Saturday 26th October – a talk entitled “Listing Buildings; it’s Importance and Process” by Elaine Jordan – 7.30pm, Frossard Theatre, Candie

Saturday 9th November – a talk entitled “The Expansion of St Peter Port Since 1790” by Richard Hocart 7.30pm, Frossard Theatre, Candie.

Saturday 23rd November – a talk entitled “The People Who Built the Houses – two case studies” by John McCormack – 7.30pm, Frossard Theatre Candie.

Saturday 14th December – a talk entitled “Dateable Features in Guernsey Houses” by John McCormack – 7.30pm, Frossard Theatre, Candie.

New members are always very welcome to attend.

Please contact John McCormack email mrjam@cwgsy.net or telephone 720303.

Ornithology - Autumn 2019

As the day length shortens, the birds that flew north in the spring to breed, begin their return journey south to Southern Europe and Africa where they will spend the winter. It is a time of year when birdwatchers can expect to see many migrating birds on passage. Guernsey is a natural stopping-off place for them to rest and re-fuel.

The Société Fields at Pleinmont have been sown with plants to attract wildlife. They were very colourful with all the wild flowers back in the summer, attracting a wide variety of insects and insect-eating birds such as Swallows. As the fields settle into the browns of autumn, they also attract the seed eaters. The fields and surrounding area have been a great success this year for resident birds, common migrants, and also Fan-tailed Warbler (very rare - last recorded in Guernsey in 2009), Melodious Warbler (scarce), Dartford Warbler (scarce), Garden Warbler (uncommon), and Ortolan Bunting (scarce). Some of these species have been seen at other locations in the island, but the fields are proving to be a hotspot. They show that, if the habitat is right, the birds will come. The land managed by La Société has a crucial role to play in supporting wildlife across the island.

An outstanding record has been a breeding pair of Cirl Buntings. Until this year, this species was categorised as a vagrant.

The only previous Bailiwick breeding record was in Sark in 1977. The pair was first recorded in April and have been seen regularly up to at least the end of August. A juvenile was photographed on 25th July. This is very exciting news as numbers of Cirl Bunting have suffered from modern farming methods.



La Société Fields at Pleinmont provide a haven for resident and passage birds. (To the left you may make out Duncan le Cras and Tony Bisson watching the Fan-tailed Warblers!). Photo courtesy of Julie Davis.



A magnificent male Pallid Harrier was a special sighting in September, again at Pleinmont. This is the first record for the Bailiwick and the second for the Channel Islands. The Guernsey Bird List will need updating!

Pallid Harrier at Pleinmont. First recorded sighting in the Bailiwick. First recorded and photographed in very overcast conditions by Rod Ferbrache.

Mark Lawlor and the Bailiwick of Guernsey Rarities Committee recently completed "Rare Birds in Guernsey 2018". This will be available to download, together with report from past years, from: www.guernseybird.org.gg

It is very thorough with excellent photographs. The records mentioned here are only a few of the notable sightings since the spring.

The Ornithology Section would like to remind all members about the importance of recording sightings on our website. Whether you record all your sightings or simply the interesting or rare, the data helps to inform us about birdlife in the island. Mark Lawlor collated data this summer on breeding kestrel sites in Guernsey. It is only from data such as this that we can know how well a species is doing compared to past years and if it is increasing or declining. Data collection is a hugely important function of this section.

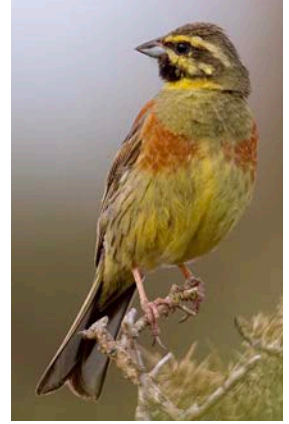
Chris Mourant, Section Secretary, organised several outdoor meetings for members and the general public over the summer. There was an evening walk around land near the Track Marais. Later in the summer, he took over twenty people on an owl walk through the lanes of St. Pierre du Bois, after a supper at the Longfrie. The owls didn't want to play, apart from a few people glimpsing a Barn Owl at the end.

In August we walked along the Shingle Bank (waders - my favourite birds!) to La Claire Mare where Chris had set up his mist nets and explained the work involved in bird ringing - I'm not sure how impressed the juvenile male Blackcap was to be the centre of attention.

The most recent walk around Jerbourg on Saturday 12th September to see autumn

migrants was very successful. The highlight were: Melodious Warbler, Common Redstart and Hobby. Also, the sight of hundreds of Swallows gathering in the fields and on the cliffs before heading out to see was very special.

Julie Davis



Male Cirl bunting. Photo courtesy of Adrian Bott, July 2019.



Members and interested people setting off on the Owl Walk. Photo courtesy of Julie Davis.

Associated Groups

Alderney Wildlife Trust	Roland Gauvain	822935
Blue Dolphins Sub-Aqua Club		bluedolphinssac@gmail.com
Friends of the Priaulx Library	Jenny Tasker	jenny@taskeronline.com
Guernsey Conservation Volunteers	Angela Salmon	721163
Guernsey Meteorological Observatory	Martin Crozier	237766
G.S.P.C.A	Steve Byrne	257261
La Société Serquaise	Jo Birch	832788
Le Cercle Français	Geoff Mahy	263029
Lé Coumité d'la Culture Guernésiaise	Dr Harry Tomlinson	255891
Guernsey Trees For Life	Andy McCutcheon	07781 110180
Plant Heritage (Guernsey Group)	Tattie Thompson	239444
Royal Society of Biology (<i>local members group</i>)	Jo Arendt	arendtjo@g.mail.com
The Alderney Society & Museum	Karen Hill	823222
The Guernsey Beekeepers' Association	Damian Harris	07911 721785
The Guernsey Botanical Trust	Cathy Morgan	07911 732912
The Guernsey Society	Michael Paul	253858
The Victor Hugo in Guernsey Society	Roy Bisson	07781 100296
WEA	Roy Bisson	07781 100296

Legacies and donations in lieu of flowers

Members are reminded that it is possible to make La Société a beneficiary of their will. Money or property can be left for general use, or if desired for a specific purpose.

They are also reminded that donations in lieu of flowers can be made in memory of members who have died.

**Guernsey Tobacco Factory,
La Ramée,
St Peter Port,
Guernsey,
C.I., GY1 2ET**



Environment Guernsey
Environmental contracting & consulting

Tel: (07781) 166924
Email: jamie.hooper@cwgsy.net
gsybiorec@cwgsy.net

Environment Guernsey is the wholly owned company of La Société Guernesiaise

We manage La Société's nature reserves and undertake numerous land management contracts for various States of Guernsey Departments, the National Trust and private individuals. We also run the Guernsey Biological Records Centre and provide an environmental consultancy service.

For all aspects of conservation advice and contracting, please contact us.

Officers & Council Members

Title:	Name:	Telephone:	Email:
Officers:			
President	Yvonne Burford	07781 146737	president@societe.org.gg
Vice President	Barry Wells	235634	bgw247@me.com
Immediate Past President	Dr Andrew Casebow	722245	
Secretary	Kate Lee	235380	secretary@societe.org.gg
Honorary Treasurer	David Cranch	07781 120915	treasurer@societe.org.gg
Membership Secretary			membership@societe.org.gg
Editor of the Transactions	Richard Hocart	254693	editor@societe.org.gg
Reserves Committee			
Chairman	Lesley Bourgaize	710737	
Communications Officer	Richard Lord		communications@societe.org.gg
Land Management & Conservation Officer	Jamie Hooper	266924	
Volunteer Co ordinator			
Reserves	Anthony Stagg	722351	
Archivist & Librarian	David Le Conte	264847	
Section Secretaries:			
Archaeology	Tanya Walls	727614	archaeology@societe.org.gg
Astronomy	Vacant		astronomy.gg@cwgsy.net
Bat Section	Charles Hurford		bats@societe.org.gg
Botany	Helen Litchfield		botany@societe.org.gg
Climate Change	Dr Andrew Casebow	722245	climate.change@societe.org.gg
Entomology	Trevor Bourgaize	710737	entomology@societe.org.gg
Family History	Maria van der Tang	248538	researchenquiries@hotmail.com
Geology and Geography	Andrew Dorey	252123	
Historic Buildings	John McCormack	720303	mrjam@cwgsy.net
Marine Biology	Laura Bampton	07839 214495	marinebiology@societe.org.gg
Natural History	Lesley Bourgaize	710737	naturalhistory@societe.org gg
Ornithology	Chris Mourant	07911 130415	ornithology@societe.org.gg
Philology	Bill Gallienne	265529	history@societe.org.gg
Zoology	Charlotte Le Marquand		zoology@societe.org.gg
Projects:			
Conservation Herd	Julia Henney		conservationherd@societe.org.gg
Guernsey Seasearch	Laura Bampton		guernseyseasearch@gmail.com
Pollinator Project	Barry Wells		pollinatorproject@icloud.com

Other Council members are: Jamie Hooper (co-opted), Helen Litchfield, Roy Bisson, Rodney Collenette, Angela Salmon, Colin Spicer, Donna Francis and Alex Hershel.

Office hours:

Our office at Candie is open to the Public on Tuesday, Thursday and Saturday Mornings between 10am and 11.30am.

Printed by Colour Monster Printshop
Tel: 01481 244175

Published by La Société Guernesaise
Candie Gardens, GY1 1UG.

Email: societe@cwgsy.net
Website: www.societe.org.gg
Tel: 01481 725093

© La Société Guernesaise