



# COMMUNIQUÉ

The Newsletter of **LA SOCIÉTÉ GUERNESIAISE**

May 2018 Issue No.96

*Guernsey's Local Research, Natural History and Conservation Society*

## 2016 TRANSACTIONS

The 2016 Transactions are now available for collection from Candie. The picture on the front cover is of a Menhir on Jethou. The office is open on a Tuesday, Thursday and Saturday morning between 10am and 11.30am – parking is easier on a Saturday morning.

As well as the usual reports from the President, the Section Secretaries and the Land Manager, the 2016 Transactions contain the results of the 2015 census of the breeding seabirds of the Bailiwick of Guernsey, the report on the 2007 archaeological excavations on Jethou, including the discovery of what may be a medieval chapel, the second part of the report on the excavations carried out before the redevelopment of the site of the Royal Hotel and a note on the collection of lizards and choughs for a seventeenth-century Governor of Guernsey.

**We have many uncollected Transactions for 2014 and 2015. If you are unable to get to Candie to collect kindly let us know. If you no longer wish to receive the Transactions or would prefer to receive them electronically via our website kindly e-mail [secretary@societe.org.gg](mailto:secretary@societe.org.gg). If anyone can help with delivering Transaction's within their Parish please e-mail [secretary@societe.org.gg](mailto:secretary@societe.org.gg).**

## PRESIDENT'S REPORT

Dear Members,

I was honoured to be elected as your president at the recent AGM. Barry Wells was elected as Vice President and together we look forward to serving La Société over the next two years. Please feel free to contact either of us if you have any ideas or comments about your organisation.

My sincere thanks go to Andrew Casebow, who stepped down from the role after two and a half years, for his immensely capable stewardship of La Société. Andrew remains on Council and I know that we will all continue to benefit from his valuable knowledge.

Other changes made at the AGM include the appointment to Council of Angela Salmon who is also involved with the Guernsey Conservation Volunteers. Helen Litchfield remains on Council, but in the new capacity of joint Botany secretary, a post she will share with Anna Cleal. Sincere thanks are due to Adrian Nicolle and the Rev. John Guille who have stepped down, for all their work.

## PRESIDENT'S REPORT (CONT)

I arrive in this role at an interesting time for La Société. The newly-formed Nature Guernsey group, which is an umbrella group of the natural history sections of the organisation, held its inaugural event at the Colin Best Nature Reserve on Saturday 16th April. A full report on this event appears later in the newsletter. I'm delighted to be supported and surrounded by so many knowledgeable and enthusiastic people, both on Council and in the wider organisation, all determined to preserve, protect and enhance our islands and to pass on their knowledge to others, particularly to young people.

I'm writing this report having just returned from the Royal Court where I agreed, on behalf of La Société, to purchase a field at Perelle. Jamie Hooper advises that the land is a seasonally wet field adjacent to similar fields behind houses along the coast road. Although the habitat has been improved for agriculture, remnants of the traditional grazing meadow remain and with suitable management, it may be possible to reinstate it to a species-rich habitat. There is a douit running around half of the field and interesting plants and invertebrates have already been recorded in the water and along the banks. Scattered reeds grow over much of the area and depending on how wet the property is in an average winter, it may be feasible to scrape some of the field to develop seasonal ponds or allow parts of it to become permanent reed bed. The options for the long-term future of this new reserve will be determined over the coming months.

At the end of March we hosted two sold-out talks by Rachel Butler, an ex-student of Blanchelande College and one of the assistant producers of the hugely successful Blue Planet II series. Richard Lord writes later in this newsletter about Rachel's presentations. Rachel has kindly agreed to return in the autumn to repeat the talk for those who missed out first time round and Kate will e-mail members about this as soon as we have a date.

We were also delighted to welcome Andrew Whitehouse from the UK charity Buglife. Andrew gave a fascinating insight into the vital importance of invertebrates – "overlooked animals that are vitally important to a healthy planet" – highlighting the things we can all do in Guernsey, in schools, workplaces and in the community. If you missed this event, you can find information at [www.buglife.org.uk](http://www.buglife.org.uk)

I cannot close without thanking our Secretary, Kate Lee, who has assisted me enormously in my first few weeks as President. On behalf of Kate, I'd like to put out a request to any member who might have a spare hour or two on the odd Tuesday, Thursday or Saturday morning between 10am and 12pm to assist with ad hoc administration tasks at Candie. If you can help, please don't hesitate to give Kate a ring during these times on 725093 and have a chat.

With best wishes  
Yvonne Burford

## NEW WILDLIFE FRIENDLY HEDGING GUIDE WITH PICTURES

Andrew Lee writes: I have made a little **'Guernsey Wildlife Friendly Hedging & Borders'** PDF guide (a computer file).

This is added to my **'Printable Guernsey Natural Tree & Shrub Guide'** and a **'Natural Field Borders for Guernsey'** guide, both also in PDF form.

Whilst the first two guides both include ideas for hedging, borders, shelter belts, windbreaks and livestock-proof hedging, the **'Guernsey Wildlife Friendly Hedging & Borders'** guide also has pictures. The guide has 22 types of hedging, and numerous other plants suitable for country style boundaries.

Making the island's domestic hedging as wildlife friendly as possible is perhaps the single best way that both homeowners and professional gardeners can help wildlife. A Pipistrelle bat can eat between 6000 and 8000 insects per night, which mostly emerge from native grassland, trees and shrubs (hedging). The problem is that probably no or very few insects live on the vast amounts of New Zealand Griselinia, Pittosporum and Japanese Spindle hedging that is in vogue at the moment. Such plants are not a product of the Guernsey ecosystem or even that of the European ecosystem, and hardly any wildlife is associated with them. The gardening industry will continue to promote them until the public choose otherwise.

I am aware that the link I previously provided for downloading the '**Guernsey Natural Tree & Shrub Guide**' will not have worked for most people. Therefore, anyone who would like copies of these two guides can email either myself at Lee-A@GMX.com or the Guernsey Biological Records Centre at GsyBioRec@cwgsy.net, and we will happily send them to you.

Andrew Lee

## THE GRIFF CALDWELL BURSARY, 2018

La Société Guernesiaise has established a bursary in memory of Frank Griffiths Caldwell, who was known to all as Griff.

Griff Caldwell was born in Guernsey in 1921. After an army career in which he reached the rank of Major-General he retired to Guernsey. He was involved in the running of La Société Guernesiaise and served as president of the society for three years. He helped the society to acquire several nature reserves and initiated various projects to enhance nature conservation in the island. He died in 2014.

The bursary is a single payment of £1,000 for a student from the Bailiwick of Guernsey taking a higher education course.

The bursary is intended to support a student who is studying a subject related to Griff Caldwell's interest in fauna, flora and the natural environment, and their conservation.

*Who is eligible to apply for the bursary?*

Any person who:

- (a) is ordinarily resident in the Bailiwick of Guernsey at the commencement of his/her course of higher education; and
- (b) is attending, or will be attending, in the autumn term 2018 a course of higher education in biological, ecological or environmental science or a course which contains a substantial element of such science.

Applications may be made in respect of undergraduate and postgraduate courses.

*How to apply:*

Please complete the application form, which can be downloaded from La Société's website:

**[www.societe.org.gg](http://www.societe.org.gg)**

Please supply with your form a letter addressed to The Secretary of La Société Guernesiaise stating:

What aspects of nature and conservation you are interested in,

## THE GRIFF CALDWELL BURSARY, 2018 (CONT)

What activities related to the study and conservation of nature and the environment you have been involved in.

How your course relates to your interest in nature and conservation,

Your plans for the future after completion of your course.

The completed form and letter should reach the office of La Société Guernesiaise by 31 May 2018.

*How we will deal with your application:*

We intend to decide on the award by 31 July 2018.

We will ask you to inform us of the results of any "A" Level or other academic examinations taken this year.

We may wish to interview you. It would therefore be helpful if you would let us know when you will be in Guernsey or the other islands in June and July 2018.

Any queries should be sent to the Secretary Kate Lee **secretary@societe.org.gg**

## IMPERIAL COLLEGE INTERESTED IN GUERNSEY'S EXTRAORDINARY VOLES

Ever heard a squeak at the bottom of the garden? How about a rustling in the hedgerow when you are out on a walk? You may have just witnessed an incredibly rare event. A run-in with a very famous vole.

You may not have known but Guernsey has a very interesting combination of small mammals, found nowhere else on the planet, and the king of these furry critters is the Guernsey vole (Mulot). A close cousin to the European Common vole, the Guernsey vole is a unique, endemic vole to the island. However, unlike their close relatives, the Guernsey vole is much larger, displaying what is known as island gigantism.

The presence of this vole is still much of a mystery and very little is known about how it got to the island. Due to the lack of information regarding the biology and ecology of the vole, it's of great scientific importance and interest for further research. Therefore, a pair of scientists from Imperial College has partnered up with Julia Henney (Biodiversity Education Officer for States), to study these very mysterious small mammals.

Throughout May and June, they are asking any residents of the island to contact them with any information regarding the presence of any small mammals, i.e. visual sightings or sounds. They are also asking that cat owners contact them and donate any dead small mammals that your cats bring in. A drop off service is being set up for donating the small mammals with current sites including the lab at Raymond Falls House and the GSPCA.

If you have seen any small mammals or are willing to donate, please contact Alexander Hayward and Eleanor Scopes at [smallmammalgroup.ic@gmail.com](mailto:smallmammalgroup.ic@gmail.com)



Left: Guernsey Vole (ref:[www.balatsky.ru](http://www.balatsky.ru)) Middle: Wood Mouse (ref:[pinterest](https://www.pinterest.com)) Right: Greater White-toothed shrew (Ref: Flickr)

**On Saturday 26th May Alex and Ellie will give an illustrated talk entitled "Things that go squeak in the night: The mysterious mammals of the Channel Islands" at 2pm in the Frossard Theatre, Candie. All welcome.**

## BLUE PLANET II TALK

Rachel Butler, assistant producer of Blue Planet II, gave a great presentation on Friday 30th March on the making of the programme accompanied by stunning scenes of the filming.

Between showing short segments of the series, she spoke about some of the camera technology used, and about the patience and persistence required to capture the unique marine animal behaviours.

It was stunning to see Galapagos sea lions capture yellowfin tuna by corralling them into a shallow bay, to see a tuskfish using coral to break open a bivalve shell, and to see Mobula rays stirring up bioluminescent algae in the Sea of Cortez.

Towards the end of her presentation, Rachel spoke about plastic pollution in the sea. "One thing we saw really upset us," she said. "I can say that we saw plastic everywhere. It was quite horrendous. On the Galapagos, in the middle of nowhere plastic was all over the place. In the Antarctic and up in the Arctic there was plastic. .... They think that eight million tonnes of plastic is dumped in the ocean every year. ... when we were in the Antarctic filming albatross half of what we found in the nests was plastic. One dead albatross had a toothpick that had gone through its tummy."

The good news is that single-use plastic bag usage has gone down in the UK, and within a week of Blue Planet II being broadcast, milkmen received 3,500 new requests for milk delivery in reusable glass bottles instead of plastic ones.

Rachel gave another fully-booked talk on Saturday 31st March and hopes to return to Guernsey later in the year to repeat her talk. More details to follow.

Richard Lord



The photo is a collage of Rachel Butler and Andrew Casebow and some posters produced by La Société Guernesiaise with a background image of a Galapagos sea lion taken in 2006. Photo courtesy of Richard Lord.

## LAUNCH OF NATURE GUERNSEY

The Natural History sections of La Société (together with the Archaeological and Astronomy Sections) launched a new identity – Nature Guernsey – at its first Spring Family Event held at the Colin Best Nature Reserve on Sunday 15th April.



One of the aims of this new initiative is to engage with non-members (especially families) and promote the benefits of LSG membership. Programmes such as the BBC Springwatch have highlighted the general public's appetite for wildlife and the environment, and Nature Guernsey hopes to capture that enthusiasm here in the island.

In addition, it is an opportunity for sections to work together more closely and collaborate on the events such as these. An awareness campaign for the Nature Guernsey brand has started through its Facebook page, a new website and interviews with local media. It will also be promoted on clothing, signage and on LSG publications.

This event was the first of four to be held in 2018, showcasing La Société's Nature Reserves. Despite the inclement weather in the morning, the event was very well attended and was a great success. The Ornithological Section manned the hides at La Claire Mare and the Colin Best reserves, and provided a bird ringing demonstration.



The Marine Biology Section led rockpooling sessions on the shoreline at Fort Saumarez, while volunteers from Entomology and Botany sections led groups along the path above the shingle bank. There was also an opportunity to view the Sun through a special astronomical device and there were lots of activities for children in the gazebos.

A second event will be held at Silbe/Orchid fields on May 12th (which will have taken place as you read this), and this will be followed by a Summer event in August and an Autumn event in October - more details to follow.

Chris Mourant leading a bird ringing demonstration. Photo courtesy of Imogen Lihou

## THE INTER-ISLAND ENVIRONMENT MEETING 2018

Thursday 20th September – Friday 21st September - The Inter-Island Environment Meeting (IIEM) will be held in Jersey this year. I attended the IIEM for the first time in 2017, and it was a fantastic couple of days! It's a really valuable opportunity to meet like-minded people from the other Channel Islands and further afield. Several section members have attended before, so let me know if you'd like to be added to the mailing list.

More details will be revealed in May, but here's what we know so far:

"The theme this year is "partnership", inspired by groups/organisations working towards a common goal. Current or future.

Have a think, discuss with your colleagues and let us know if you'd be interested in contributing a short presentation about a project you are involved in that you'd like to share at the meeting.



## THE INTER-ISLAND ENVIRONMENT MEETING 2018 (CONT)

This year's exciting venue, Crabbé, is a newly renovated outdoor centre belonging to Jersey's Youth Service and ideally located on the island's north coast. The centre has basic accommodation for those who are visiting, giving us a friendly holiday camp feel, ideally suited to this year's theme, with all conveniences situated on site including a wood-fired pizza oven. For those who would rather not sleep in a bunk-bed or tent, there will be hotel rooms available nearby.

We will provide accommodation suggestions, along with travel details and how to register to attend the meeting, provide a talk or display a poster in our following email in May"

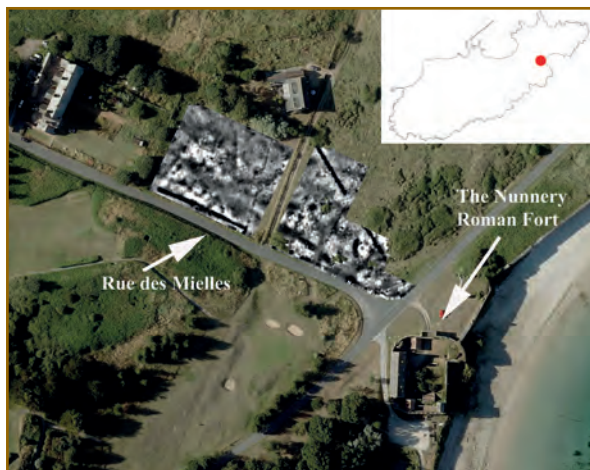
As ever, e-mail me at [marinebiology@societe.org.gg](mailto:marinebiology@societe.org.gg) if you have any questions. I'll be in touch again soon with details about this event.

Laura Bampton

## SECTION REPORTS

### ARCHAEOLOGY

The purchase of the earth resistance survey kit at the end of last year has enabled the Section to complete two very successful geophysical surveys. Société members who attended Louise Randell's informative talk on this subject will know that the sites surveyed are a garden in Queen's Road and a part of Longis Common in Alderney. The former is a large garden located near to the King's Road Iron Age site, which was discovered in the 1980's. Development-related excavations off King's Road have revealed an Iron Age cemetery and settlement, but the extent of the surviving archaeology is not fully known. The results of the Queen's Road survey will help us to understand more about this. The Alderney site is close to The Nunnery – the Roman Fort on Longis Bay (see image). Last summer a service trench dug alongside Rue des Mielles (the road running from the north-west of the island down to the Nunnery) revealed a series of Iron Age cist burials and some walls which could be Roman. The area surveyed is across the road from the service trench. It is hoped that archaeological excavation will go ahead this summer and we will target some of the more promising looking features revealed by the survey.



**Geophysical survey at Longis, Alderney:**  
The dark features are areas of low electrical resistance (holding moisture, less compact); the white features are areas of high electrical resistance (dry, more solid). The very strong black lines are modern service trenches. The more subtle dark lines and patches are relatively old ditches and pits. The white features may be walls; either of buildings or enclosures. In view of past discoveries in this area, it is very likely that some of this activity will prove to be Iron Age and Roman in date.

Image courtesy of Digimap and the survey imposed upon it is Archaeology Section.

### FORTHCOMING EVENTS:

#### **Excavations on L'Ancrese Common Sunday 3rd - Friday 8th June**

An evaluation of three possible Bronze Age barrows will take place just off the L'Ancrese Road, close to The Doyle and the bus terminus. This work will be carried out by the Clifton Antiquarian Club and they will be hosting an open afternoon at some point during the week – the exact date will be decided later. The public are welcome to observe the work at any time.

#### **“Sark - a Sacred Isle?” - Friday 8th June, 7.30pm a talk by Professor Sir Barry Cunliffe.**

(Free entry for LSG members, non-members £5 payable on the door) – Professor Cunliffe heads a project investigating the archaeology of Sark. In June he and his team will be returning for their 14th season of fieldwork.

Tanya Walls

## BAT SECTION

If you find an injured bat you should contact Aimée Golden directly on 07911 713115 or the GSPCA, who will contact the Bat Section.

Please e-mail Aimeé for details of the next Bat Section meeting, new members are welcome.

**E-mail address** [bats@societe.org.gg](mailto:bats@societe.org.gg)

## ASTRONOMY

### **See the Stars with Large Telescopes**

Visitors are welcome at Guernsey's Astronomical Observatory on the following dates:

- **Monday 28th May (Bank Holiday) from 10.30am to 12.30pm to observe the Sun.**
- **Thursday 26th July 9pm**
- **Thursday 2nd August 9pm**
- **Thursday 9th August 8.30pm**
- **Thursday 16th August 8.30pm**
- **Thursday 23rd August 8.30pm**
- **Thursday 30th August 8.30pm**

Visitors will be shown how the telescopes operate with viewing if clear and given illustrated talks on space related subjects.

Donations are welcomed and assist with running and maintenance costs.

**We suggest adults £2, children £1.**





Astronomical Observatory Open Day 12th August 2017. Composite image showing Milky Way and Perseids meteor shower. Photograph courtesy of Trevor Mahy and processing by Jean Dean.

The Observatory is in La Rue du Lorier, St Pierre-du-Bois. Perry's Guide reference 21 E3. Parking is available at La Houquette School, Rue des Paysans. From the school go 100 yards up the road, then left onto Rue du Lorier, then immediately right, behind a large bunker. The road is dark, so a torch is advisable.

For further information and directions see [www.astronomy.org.gg](http://www.astronomy.org.gg), or call **Colin Spicer on 721997**.



**10.30 am to 12.30 pm, Bank Holiday Monday  
28<sup>th</sup> May 2018**

## **Open Day at the Astronomical Observatory**

Looking at the Sun with any optical instrument is normally very dangerous, but the Observatory telescopes are equipped with special filters, enabling solar observation to be carried out safely. There is also a 'heliostat' for projecting an image of the Sun onto a screen. It is hoped that there may be sunspots to see. There will also be slide-show presentations about the Sun, and the Open Day will proceed whatever the weather.

The Observatory is in La Rue du Lorier, St Pierre-du-Bois. Perry's Guide ref 21 E3. Parking available at La Houguette School, Rue des Paysans. From the school, follow the signs: go 100 yards up the road, then left onto Rue du Lorier, then immediately right, behind a large bunker.

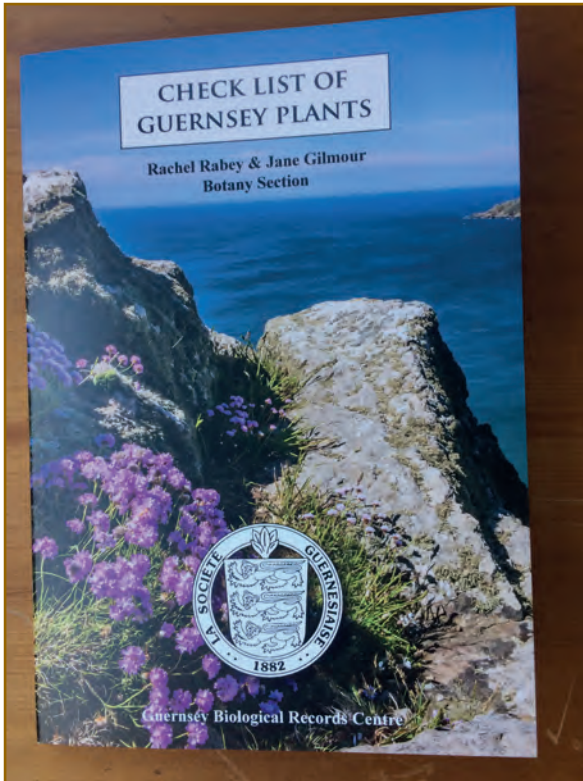
**The Observatory is run by volunteer members of the  
Astronomy Section, La Société Guernesiaise.**

No charge is made, but donations are welcome to assist with running and maintenance costs.

[www.astronomy.org.gg](http://www.astronomy.org.gg)

## Check List of Guernsey Plants by Bridget Ozanne

Please note the above book has been updated by Rachel Rabey and Jane Gilmour and re-printed. It is available from Candie for £6 or can be ordered via the website [www.societe.org.gg](http://www.societe.org.gg).



Bridget Ozanne's list of 2005 has been re-arranged according to Stace's "New Flora of the British Isles", third edition, 4th printing 2015.

All new plants in the Bailiwick since 2005 have been included in the new list. Bird seed aliens occurring in gardens have been omitted. Species enclosed in brackets have not been seen since 1990 and are considered extinct in the Bailiwick. Status designations are based on the records held at the Guernsey Biological Records Centre.

Rachel and Jane would like to thank the following people for checking, correcting and providing additional information: Jennie Grange (Page), Hazel Gray, Anne Haden, Carolyn Helyar, Andrew Lee, Elizabeth Sweet and Susan Synott. Thanks also go to Brian Bonnard for the use of his checklist of Alderney plants.

Rachel Rabey and Jane Gilmour.

## BOTANY WALKS

**Saturday 2nd June, 2pm** - Goat field, behind Le Guet. Go from the coast, past St. Matthew's church, next left into Ruelle du Froq. Turning on left into field between privet hedge and a grass bank, just after a house with a sunflower painted bench. Parking could be limited so please consider sharing lifts. Perry's guide pg 15.

**Saturday 7th July, 2pm** - Bunker hill looking for Deptford Pink.

**Saturday 28th July, 2pm** - Change of date for August. Bordeaux for the nature reserve, meeting at the northern most car park. Perry's guide pg 7, H5.

**Saturday 1st September, 2pm** - Pullas pond and Les Vardes Quarry nature trail meet in the car park by Pullas Pond, Perry's guide pg 33, G4.

**Saturday 6th October, 2pm** - Reservoir walk, meeting Rue des Annevilles end of dam, Perry's guide pg 21, G2.

**For further enquiries about the monthly Botany walks please contact Anna Cleal by e-mail: [botany@societe.org.gg](mailto:botany@societe.org.gg)**

Please join the Botany Section's Facebook page where you will find details of the monthly walks and recent plant photos. Once you have joined you can add your own images – please see <https://www.facebook.com/groups/1310943042297921/>

## ENTOMOLOGY

**Contact Trevor Bourgaize e-mail [entomology@societe.org.gg](mailto:entomology@societe.org.gg)**

## FAMILY HISTORY

### Events

**Wednesday 20th June** Visit to Saumarez Park Folk Museum, 7pm.

**Wednesday 18th July** - 6.30pm – a guided walk by Victoria Robinson, a young, newly-qualified & very enthusiastic Silver Tour Guide. The walk is entitled "The Vale Parish during the Occupation and Earlier" - it starts and ends at L'Ancrese Kiosk. The walk will take approximately 2.5 hours as there is so much to cover. There will be a charge of £10 for this by the guide, to cover costs, payable on the evening.

**Friday 12th October** Family History Meal at Le Grande Mare Hotel, 7pm for 7.30pm. Places are filling up fast so if you would like to go please contact Graeme Cox on tel. number 254316.

The Family History Room at the Russels Center at Les Cotils is open every 1st and 3rd Saturday with new trial opening times of 9.30am until 12.30pm. Everyone is welcome so if you have a friend or relative who would like help on how to research or advice with any problems we are happy to help. Any general Family History queries should be addressed to The Family History Section, PO Box 314, St Peter Port, Guernsey GY1 3TG. Alternatively e-mail Maria van der Tang

**[researchenquiries@hotmail.co.uk](mailto:researchenquiries@hotmail.co.uk)**

Maria van der Tang



Contact Andy Dorey Tel 252123 or e-mail: [andydorey3@gmail.com](mailto:andydorey3@gmail.com)

## HISTORIC BUILDINGS

Please see our website [www.societe.org.gg](http://www.societe.org.gg) for details of the many talks and events this Section organises. Any queries can be sent to John McCormack [mrjam@cwgsy.net](mailto:mrjam@cwgsy.net)

## JUNIOR SECTION

For details of Junior events please contact Chris Mourant **Tel.07911 130415**  
or e-mail [chris.mourant@yahoo.co.uk](mailto:chris.mourant@yahoo.co.uk)

## MARINE BIOLOGY

### Annual Ormer Survey

The ormer survey is always a highlight of the Marine Biology Section's year, and 2018 was no different. Eleven section members turned out on a beautifully sunny Sunday afternoon to explore the rockpools of the Lihou intertidal area and search for green ormers (*Haliotis tuberculata*). This year, a total of 19 ormers were found, a record for recent years. Each ormer was photographed and measured, with the average size being 45mm. The largest we found was 86mm long (the legal harvestable size is 80mm).



One of 19 Ormers found by Section Members – photo courtesy of Laura Bampton

As well as ormers, we saw lots of other exciting marine life, and here is a snapshot of our findings.

**Broad-clawed porcelain crab (*Porcellana platycheles*)** - This was one of our most common finds. Its flattened claws and carapace make it well-adapted for its life under rocks and stones.



Broad-clawed Porcelain crab, a frequent sight during the Ormer survey – photo courtesy of Laura Bampton

**Edible crab, or Chancre (*Cancer pagurus*)** – Adults of this species live in deep water, but young animals are often found in the lower intertidal zone. Chancres can live to be 20 years in the wild.



Edible crab or “Chancre”  
Photo courtesy of Laure Bampton.



**Velvet swimming crab, or lady crab (*Necora puber*)** - The velvet swimming crab is known for being very aggressive, and the specimens we found were no different! It gets its name from the short hairs that cover its carapace, making it feel like velvet to the touch.

**Common eelgrass (*Zostera marina*)** – This marine flowering plant provides a valuable spawning ground for a number of important fish species, and its presence in this area was a factor leading to the designation of the Lihou Island and L'Erée Headland Ramsar site. Common eelgrass is one of two seagrass species to be found around Bailiwick coasts. The other species of seagrass in the Bailiwick, dwarf eelgrass (*Zostera noltei*), has only be recorded around Herm and Jethou.

**Japanese wireweed (*Sargassum muticum*)** – This is an invasive non-native seaweed, introduced to Europe from the western Pacific through the aquaculture industry, attached to the shells of Pacific oysters. This seaweed has fast growth rates, high fecundity, and fragments survive in the water column for a long time. In addition, it is tolerant of a wide range of environmental conditions. These factors come together to make *Sargassum* a strong competitor, capable of displacing native species.

**Slipper limpet (*Crepidula fornicata*)** – Another invasive species, this mollusc is thought to have arrived in British waters in ships' ballast water. Their life history is fascinating: they are known as 'protandrous hermaphrodites', meaning they begin life as male, and turn into females, the process lasting around 60 days. They are often found in mating chains of up to 12 individuals, with a male on top, a female on the bottom, and those in between in a transitional state.

All records from the ormer survey were sent to the Guernsey Biological Records Centre, where they contribute to an extremely valuable dataset on Guernsey's biodiversity. I would encourage any Société members to record their sightings and send them to the GBRC. Not only is this data important, the process of identifying species is a valuable learning experience.

If you would like to find out more about what the Marine Biology Section does or become more involved in the section please email [marinebiology@societe.org.gg](mailto:marinebiology@societe.org.gg)- we're always happy to see new members!

Laura Bampton

### Beach Cleaning in Guernsey

Why not join a group clean? These are organised each month by La Société Guernesiale and Guernsey Recycling Group. Equipment and hot drinks will be provided. For more information email [marinebiology@societe.org.gg](mailto:marinebiology@societe.org.gg) or call Guernsey Recycling Group on 247786.

Date	Location	Meet Time
03/03/18	Portelet- Meet at kiosk	1100
31/03/18	Belle Greve- Meet in coastal car park opposite Channel TV	1330
28/04/18	Vazon- Meet outside Surf School	1130
26/05/18	Pembroke- Meet in car park by the Beach House	1030
30/06/18	Cobo- Meet at kiosk	1400
28/07/18	Bordeaux- Meet at Woodies car park	1330
18/08/18	Rousse- Meet at kiosk	1700
15/09/18	Grandes Rocques- Meet at kiosk	1500
16/09/18	L'Erée- Meet in car park opposite hotel	1500
13/10/18	Grand Havre- Meet at Vale Pond kiosk	1500
10/11/18	Chouet- Meet at kiosk	1330
08/12/18	Pezeries- Meet at Portelet kiosk	1100

**Take 3 for the Sea**

Not able to take part in an organised clean? Don't worry, you can still do your bit! Every time you visit a beach, just take 3 items of litter away with you. If you want to share what you've collected, take a picture and upload it to Instagram or Facebook using the hashtag #take3forthesea and tag the location.

**Help and Advice**

If you find any items too large or heavy to move, make a note of the location and call Land Management Services on 234567, who will arrange for it to be collected.

If you find any containers or drums that you think *could* contain hazardous substances, please advise the Guernsey Fire & Rescue Service on 724491.



LA SOCIÉTÉ  
GUERNESIAISE



GRG



Islands of Guernsey  
Guernsey Islands Council  
Land Management Services

A big **thank you** for helping to protect our beautiful natural environment!

### EVENTS

**Sunday 24th June** - Trip to Herm. Please purchase your own tickets for 8.30am boat. Return time optional. Birds, insects, flowers.

**Monday 16th July** - Port Soif. Please meet at 7pm in the car park next to the tearoom. We will monitor the affect the herd has had on the regeneration of flora.

**Monday 17th September** - Please meet at 6.30pm in the Bowl carpark. We will look at land acquired by La Société near Château des Marais.

More information about the Section can be found on the Société website or by contacting

**Lesley Bourgaize on 710737 or email: [lbourgaize@cwgsy.net](mailto:lbourgaize@cwgsy.net)**

### ORNITHOLOGY

Late winter and early spring has been a busy time for local bird watchers this year. The irruption of hawfinches got better and better with a peak of over twenty observed at Le Foulon at the end of March. The last recorded sighting was on 16 April when 3 were seen at the same site as many of the birds had started their spring migration. This has been quite unprecedented in the Bailiwick and many people have used the opportunity to view these characterful visitors at close quarters.

Many people have been enjoying Blackcaps on their garden feeding stations over the past few months. It is always worth putting out apples over the cold months as this food attracts them into gardens. I have also seen them enjoying fat balls (no plastic netting, please, as birds can get their tongues caught in it) and suet pellets. These individuals do not stay in the island for the breeding season but have headed off to central Europe. We now have different birds that have migrated here to breed and rear this year's chicks. Their fluty call can be heard around the island, particularly in the wooded valleys that run down to the sea on the south coast - I have heard them this month (May) in the smallest of wooded areas.

Some of the outstanding sightings of migrating birds have been:

Iberian Chiffchaff at Sausmarez Park. I believe this record is a first for Guernsey, observed by Mark Guppy on 22nd April. It stayed in the area until at least the end of the month.

Osprey at La Capelle Island and the Shingle Bank. It stayed long enough to catch and eat a mullet. There was a second sighting on 15th April when one very obligingly did a low fly-over at the Nature Guernsey event which helped to make up for the wet conditions.

The first swallow was seen on 1st April at Pleinmont, an indication of the long, cold winter. 2007 was the last year when there was a first sighting in April. They are usually seen arriving towards the end of March. Sand Martins, as ever, were ahead of the swallows, the first ones were observed on 24th March at Fort Doyle.

Other interesting sightings have been Garganey (Claire Mare, 12th April), Black-tailed Godwit (Colin Best Nature Reserve), Little Ringed Plovers (Rue des Hougues, St. Andrew, 2nd April). As I write this, Petit Bôt is turning up trumps with Turtle Dove, Black Kite and a Grasshopper Warbler. If you would like to follow sightings, or find out more about the birds of Guernsey, go to [guernseybirds.or.gg](http://guernseybirds.or.gg). This site has a wealth of information.

Earlier in the spring, we were fortunate enough to have a talk by John Horton, warden of the Alderney Bird Observatory. With his wide experience and detailed knowledge, John gave interesting insights about how difficult it can be to identify some species of bird and how Alderney's birdlife is significantly different to Guernsey's. His talk was very well received and it looks as though many local birders may well be visiting Alderney in the not-too-distant future.

Chris Maurant, Ornithology Section Secretary, has ensured that the Breeding Bird Survey, organised by the British Trust for Ornithology, has all the Guernsey squares covered for the second year running.

Chris, with a small group of volunteers, went over to Lihou on 28th April to rope off areas where gulls are breeding. Winter storms had managed to uproot some of the older posts that had been bedded into the shingle. At one point, the roping team had to work around one gull's nest with two eggs in it - very neatly made from old bracken - as it was almost on the path.

For more information go to [ornithology@societe.org.gg](mailto:ornithology@societe.org.gg) or call Chris on 07911 130415. He would welcome you to the Section. We meet on the first Thursday of each month. Meetings over the summer are usually outdoors. To find out where they are being held and the time please go to [guernseybirds.org.gg](http://guernseybirds.org.gg). This site also has a wealth of information about the birds of Guernsey.

Julie Davis



*Greenshank, a spring visitor at La Claire Mare.*

Photo coutesy of Julie Davis.

## THANKS TO OUR CORPORATE MEMBERSHIP SPONSORS FOR 2018

**Bank Julius Baer & Co Ltd**

**Bayswater (Guernsey) Limited**

**Butterfield Bank (Guernsey) Limited**

**BWCI Foundation**

**Collenette Jones & Co**

**Creasey's Limited**

**Garenne Construction Group Limited**

**Guernsey Museum & Art Gallery**

**Guernsey Post Limited**

**HSBC**

**Insurance Corporation of the Channel Islands**

**Investec Asset Management Guernsey Limited**

**KPMG Channel Islands Limited**

**Moore's Hotel**

**Perkins Trustees Limited**

**PwC**

**RBC Wealth Management**

**Ronez Limited**

**R A Rossborough (Guernsey) Limited**

**Stan Brouard Limited**

**The Channel Islands Co-operative Society Limited**

## ASSOCIATED GROUPS

Alderney Wildlife Trust	Roland Gauvain	822935
Blue Dolphins Sub-Aqua Club	Jessie Jennings	bluedolphinssac@gmail.com
Friends of the Priaulx Library	Jenny Tasker	jenny@taskeronline.com
Guernsey Conservation Volunteers	Angela Salmon	721163
Guernsey Meteorological Observatory		
G.S.P.C.A	Martin Crozier	237766
La Société Serquaise	Steve Byrne	257261
Le Cercle Français	Jo Birch	832788
Lé Coumité d'la Culture Guernésiaise	Geoff Mahy	263029
Guernsey Trees For Life	Dr Harry Tomlinson	255891
National Council for the Conservation of Plants and Gardens (Guernsey Group)	Andy McCutcheon	07781 110180
The Alderney Society & Museum	Tattie Thompson	239444
The Guernsey Beekeepers' Association	Karen Hill	823222
The Guernsey Botanical Trust	Chris Tomlins	07781 100311
The Guernsey Society	Ivan Le Tissier	07911 719115
WEA	Michael Paul	253858
	Roy Bisson	256848

## LEGACIES AND DONATIONS IN LIEU OF FLOWERS

**Members are reminded that it is possible to make La Société a beneficiary of their will. Money or property can be left for general use, or if desired for a specific purpose.**

They are also reminded that donations in lieu of flowers can be made in memory of members who have died.

Guernsey Tobacco Factory,  
La Ramée,  
St Peter Port,  
Guernsey,  
C.I., GY1 2ET

Tel: (07781) 166924  
Email: jamie.hooper@cwgsy.net  
gsybiorec@cwgsy.net



### **Environment Guernsey is the wholly owned company of La Société Guernesiaise**

We manage La Société's nature reserves and undertake numerous land management contracts for various States of Guernsey Departments, the National Trust and private individuals. We also run the Guernsey Biological Records Centre and provide an environmental consultancy service.

For all aspects of conservation advice and contracting, please contact us.

## OFFICERS & COUNCIL MEMBERS

Title:	Name:	Telephone:	Email:
<b>Officers:</b>			
President	Yvonne Burford	07781 146737	president@societe.org.gg
Vice President	Barry Wells	235634	
Immediate Past President	Dr Andrew Casebow	722245	
Secretary	Kate Lee	235380	secretary@societe.org.gg
Honorary Treasurer	David Cranch	07781 120915	treasurer@societe.org.gg
Membership Secretary	Janice Firth		membership@societe.org.gg
Editor of the Transactions	Richard Hocart	254693	editor@societe.org.gg
Reserves Committee			
Chairman	Jane Gilmour	700024	
Land Management & Conservation Officer	Jamie Hooper	266924	
Volunteer Co ordinator			
Reserves	Anthony Stagg	722351	
Archivist & Librarian	David Le Conte	264847	
<b>Section Secretaries:</b>			
Archaeology	Tanya Walls	727614	archaeology@societe.org.gg
Astronomy	Dr Colin Spicer	721997	astronomy.gg@cwgsy.net
Bat Section	Aimée Golden		bats@societe.org.gg
Botany	Anna Cleal		botany@societe.org.gg
Climate Change	Dr Andrew Casebow	722245	climate.change@societe.org.gg
Conservation Herd	Julia Henney		conservationherd@societe.org.gg
Entomology	Trevor Bourgaize	710737	entomology@societe.org.gg
Family History	Maria van der Tang	248538	researchenquiries@hotmail.com
Geology and Geography	Andrew Dorey	252123	
Historic Buildings	John McCormack	720303	mrjam@cwgsy.net
History	Vacant		
Junior	Chris Maurant	07911 130415	chris.maurant@yahoo.co.uk
Marine Biology	Laura Bampton	07839 214495	marinebiology@societe.org.gg
Natural History	Lesley Bourgaize	710737	
Ornithology	Chris Maurant	07911 130415 / 254841	ornithology@societe.org.gg
Philology	Bill Gallienne	265529	history@societe.org.gg
Zoology	Vacant		

### In addition to the Section Secretaries being Council members, other Council members are:

Jamie Hooper (co-opted), Jane Gilmour (co-opted), Roy Bisson, Vanessa Crispini-Adams, Rodney Collenette, Alex Hershel and Angela Salmon.

### Office hours:

Our office at Candie is open to the Public on Tuesday, Thursday and Saturday Mornings between 10am and 11.30am.

### Published by La Société Guernesiaise

Candie Gardens, GY1 1UB.

**Email:** [societe@cwgsy.net](mailto:societe@cwgsy.net)

**Website:** [www.societe.org.gg](http://www.societe.org.gg)

**Tel:** 01481 725093